

IAITAM ACE

KICKIN' ASSETS
SINCE 2002

**ITAD ESG Claims:
What NOT to
believe!**

Rike Sandlin
Rivervista Partners



NASHVILLE, TN
MAY 9TH - 11TH

Agenda

- Introduction and ESG
- Define YOUR objectives
- 1st Criteria – Systemic Controls & Certification
- 2nd Criteria – Sustainability Core Values and Doing Good Well
- 3rd Criteria – Where are they on their ESG journey?
- 4th Criteria – Transparency & Integrity
- 5th Criteria – Defensible Metrics



Defining YOUR Objectives

- Governance – Data Security, Environmental Compliance, and Financial Return?
- Environment & Sustainability – Waste Avoidance, Maximize Reuse, and GHG Emissions?
- Social Impacts – Employee Support, Donations, Community Engagement, and Partnerships?
- Make sure your ITAD partner is aligned



1st Criteria – Systemic Controls

- ERP Systems
- Process Governance
- Strong Security
- Certifications:
 - R2, E-Stewards, ISO/RIOS, NAID, B-Corp, ASCDI, etc.



2nd Criteria – Core Values

➤ 3 P's of Sustainability – the Triple Bottom Line:

- People
- Planet
- Profit
- Doing Good Well
- How do they live this out?



[This Photo](#) by Unknown Author is licensed under [CC BY](#)



2nd Criteria – Core Values

➤ Circularity / Circular Economy

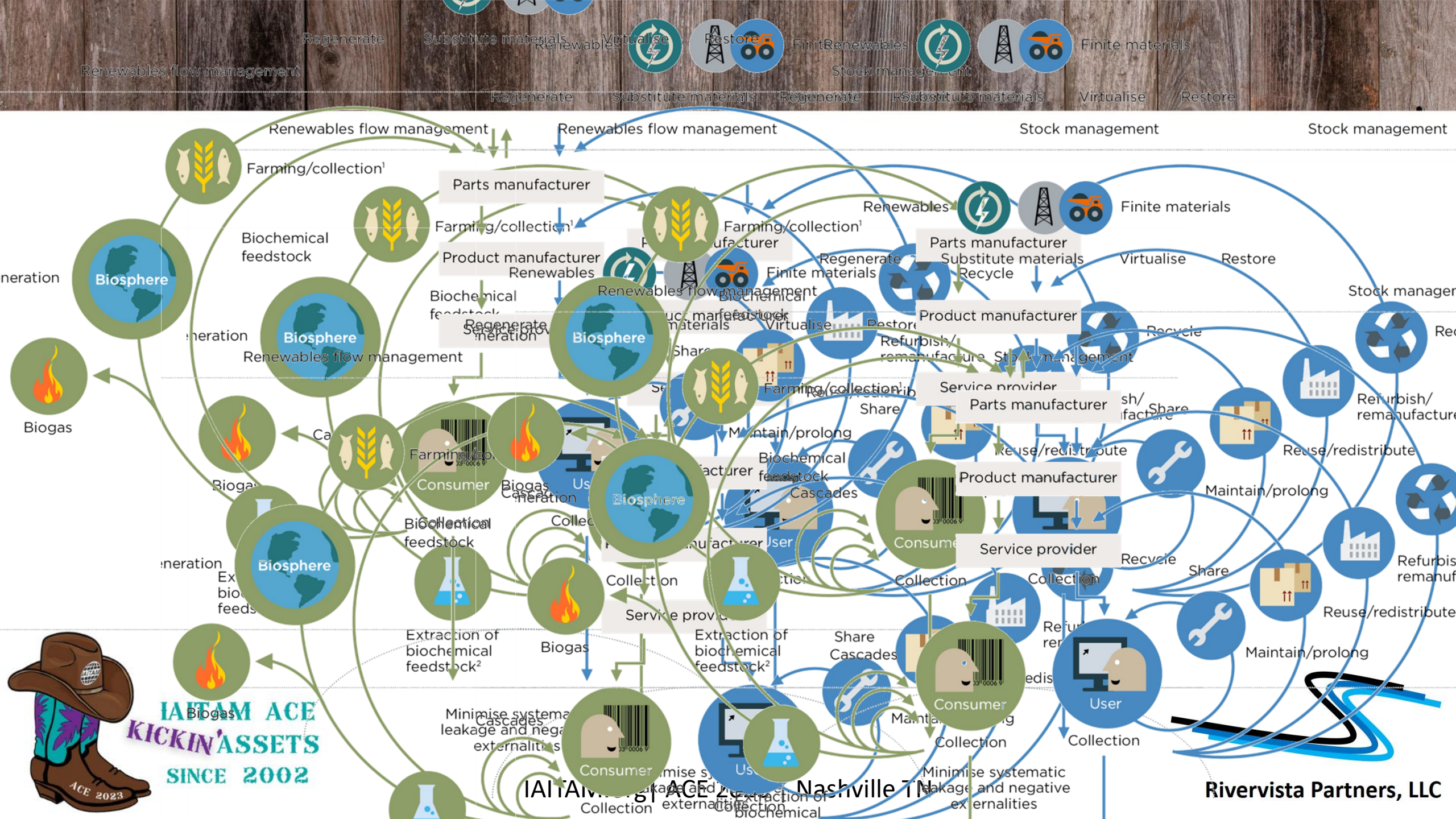


[This Photo](#) by Unknown Author is licensed under [CC BY-SA](#)

IAITAM.org | ACE 2023 | Nashville TN



Rivervista Partners, LLC



2nd Criteria – Core Values

- **Circularity / Circular Economy**
- **How do they live this out?**
- **Do they really understand how each device and component moves in a circular system?**



3rd Criteria – The ESG Journey

- ESG is a journey – it's not possible to simply flip a switch and say, "Now I've got ESG! Come buy some ESG from me!"
- Reporting environmental benefits of reuse and recycling – kilowatt hours saved, GHG saved, landfill and haz waste avoidance, etc.
- This is so easy, and it has little to do with the ITAD company's own operations.



3rd Criteria – The ESG Journey

- Documenting circularity, understanding emissions, building community programs, and impactful partnerships – this is difficult, time-consuming work.
- And what about understanding materiality, additionality, intentionality, and other key factors?
- Where are they on their ESG journey?



4th Criteria – Transparency & Integrity

- We've established:
 - They're aligned with your objectives
 - They have well-grounded systemic controls
 - They walk the walk with core values in sustainability & circularity
 - They know where they are on the ESG journey
- But are they open and trustworthy? How do they demonstrate that in communications and reporting?



5th Criteria – Defensible Metrics

- In ITAD, as well as many other relationships, performance metrics are critical.
- But in ESG reporting, these metrics may become part of your own public disclosures. How can you have confidence they're factual?
- Gold Standard or Verified Carbon Standard (VCS) for carbon offsets; 3rd party audits of ESG claims; mapping to the UN SDG (sustainable development goals) and GRI (global reporting initiative) standards – these are just a few.



Can you believe their claims?

- Does it matter? YES!
- Demand that your partners align with your objectives and meet each of your criteria.
- Make impactful sustainability and ESG reporting a part of your ITAD program; and challenge your ITAD partner to take the next steps in their journey to stay aligned with you.
- Ask for help setting up a program to protect you from “greenwashing”.



Connect with me to learn more

Rike Sandlin

Rivervista Partners, LLC

rike@rivervistapartners.com

[linkedin.com/in/rike-sandlin-3432561](https://www.linkedin.com/in/rike-sandlin-3432561)

769-218-9825



IAITAM.org | ACE 2023 | Nashville TN

